

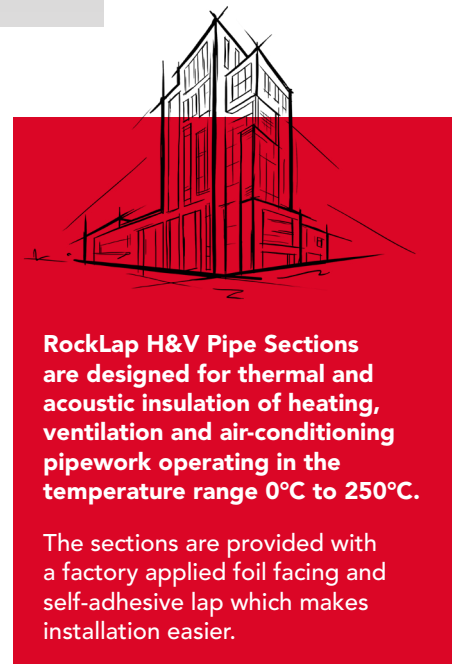
RockLap H&V Pipe Sections

Stone wool insulation for pipework

RockLap H&V Pipe Sections are cylindrical sections of stone wool insulation, manufactured pre-slit and with a foil facing complete with integral self-adhesive lap.

- Non-combustible, rated Euroclass A2_L-s1, d0
- Reinforced aluminium foil facing provides vapour-resistant barrier
- Self-adhesive foil lap enables efficient installation and reduces need for additional aluminium tape
- Tested to EN 1366-3 for the fire resistance of penetration seals offering up to EI 120*

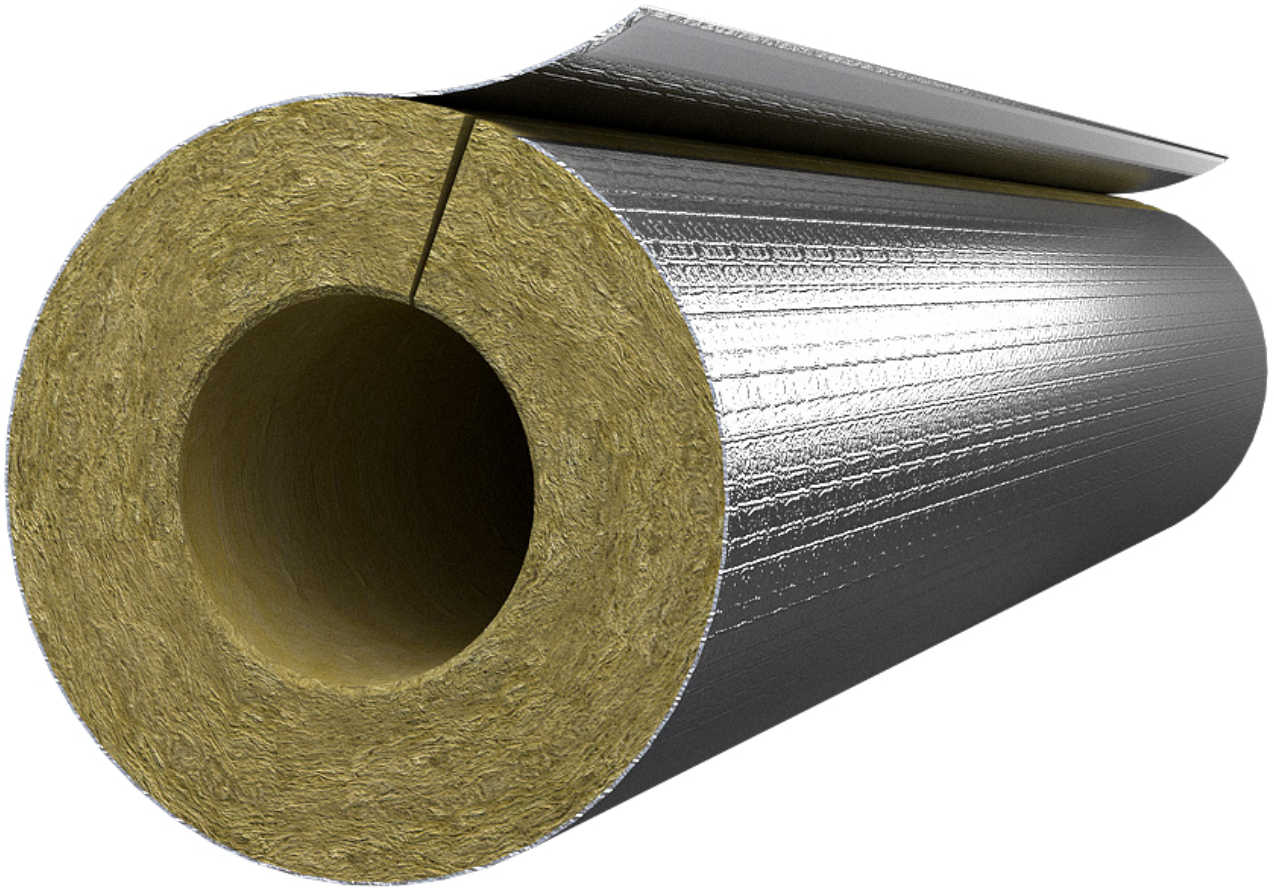
**Subject to the application*



RockLap H&V Pipe Sections are designed for thermal and acoustic insulation of heating, ventilation and air-conditioning pipework operating in the temperature range 0°C to 250°C.

The sections are provided with a factory applied foil facing and self-adhesive lap which makes installation easier.

RockLap H&V Pipe Sections



APPLICATIONS

Suitable for use on pipework operating between 0°C and 250°C.

RockLap H&V Pipe Sections are tested to provide fire-stopping where steel and copper pipes penetrate fire-resistant walls and floors. The testing allows the product to run continuously through the separating element, saving time and labour costs which would otherwise be incurred should the pipe insulation have to be locally removed or replaced.

RockLap H&V Pipe Sections

PERFORMANCE

Thermal performance

Temperature (°C)	Curve 1 (W/mK)*	Curve 2 (W/mK)*
10	0.033	0.034
50	0.037	0.039
100	0.044	0.048
150	0.052	0.056

*The thermal conductivity curve used depends upon the size of the pipe section. For further information please refer to the DOP.

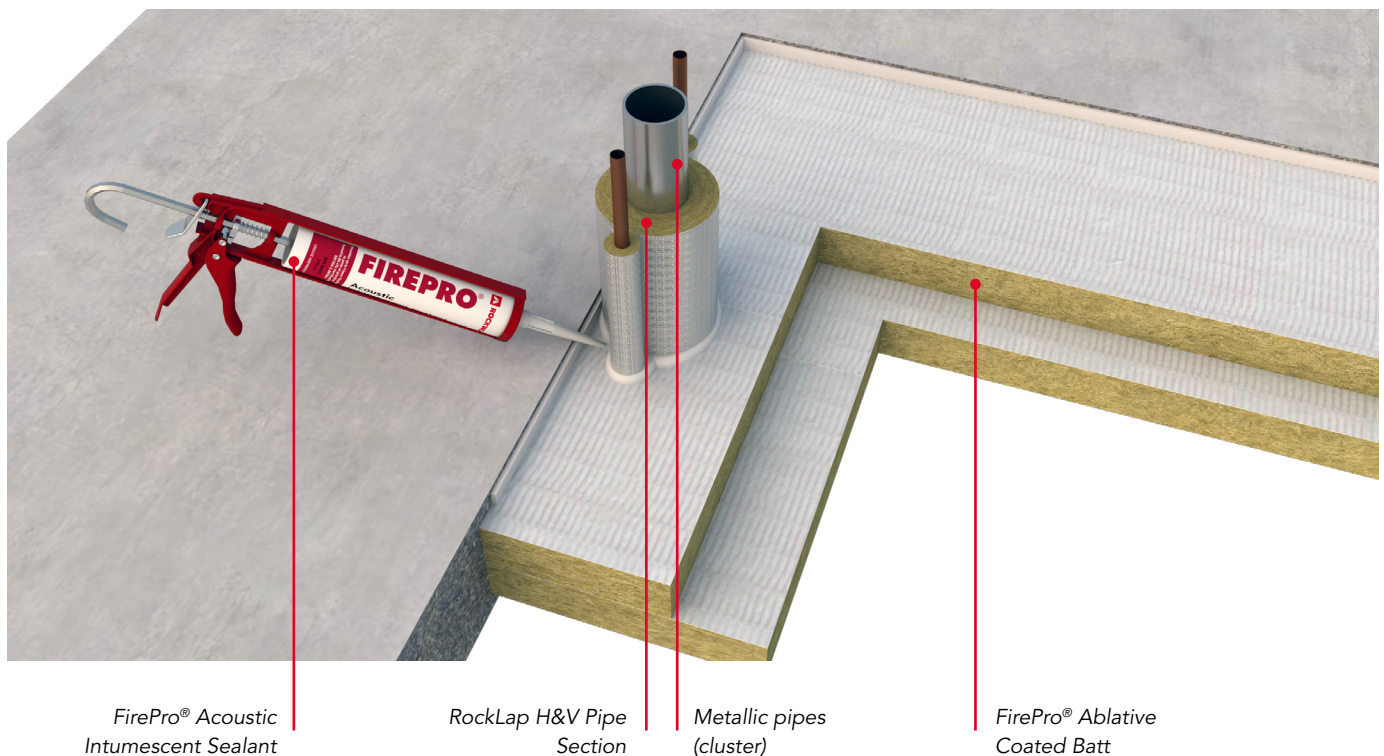
Fire performance

- Euroclass A2_L-s1,d0.
- Tested to EN 1366-3, the harmonised European standard for the fire resistance of penetration seals.
- Provide up to 120 minutes** fire resistance integrity and insulation.

For more information regarding the performance of RockLap H&V Pipe Sections when used within a fire resisting penetration seal, please follow the link below.

[Fire-stopping Standard Details Guide >](#)

**Subject to the application



RockLap H&V Pipe Sections

PRODUCT INFORMATION

Water resistance

RockLap H&V Pipe Sections are water repellent. However, when used or stored in the open, the insulation should be protected with a waterproof covering. When used to insulate cold pipes, the joints should be sealed with foil tape to prevent condensation.

Service temperature

RockLap H&V Pipe Sections are used to insulate pipes operating at temperatures in the range 0°C to 250°C. In order to maintain foil facing bond strength, the thickness of insulation should result in an outer surface temperature no greater than 80°C.

Durability

Tests of our stone wool recovered from old buildings have shown that it retains its performance characteristics – thermal, mechanical, fire resistance – for at least 50 years, and probably longer. A test of a 65-year-old stone wool sample found in 2023 during a renovation of Copenhagen airport showed that these characteristics had not diminished after 65 years.*

Biological

ROCKWOOL stone wool is a naturally inert and rot-proof material that does not encourage or support the growth of fungi, moulds or bacteria, or offer sustenance to insects or vermin.

STANDARDS AND APPROVALS

Certificate
RockLap H&V Pipe Sections are CE marked in accordance with BS EN 14303. For more information please visit www.rockwool.co.uk/DOP
RockLap H&V Pipe Sections conform to BS 3958-4, 'Bonded preformed stone wool pipe sections' and can be used to satisfy BS 5422: 'Method for specifying thermal insulating materials...'. The product has been authorised for use in LUL surface and sub-surface premises when installed in accordance with this data sheet – please refer to the LUL Approved Product Register website www.LU-apr.co.uk for specific details.



**Testing done at Danish Technical Institute (DTI) in 2023, "Testing ROCKWOOL insulation from CPH airport hangar 4"*

RockLap H&V Pipe Sections

INSTALLATION

RockLap H&V Pipe Sections are supplied with an integral self-adhesive overlap. Place the section around the pipe and seal accordingly (Figure 1).

All joints between RockLap H&V Pipe Sections must be sealed with aluminum foil tape (Figure 2).

Handling

RockLap H&V Pipe Sections are easy to cut to any shape with a sharp knife. When stored outside, avoid contact with the ground and cover with a securely anchored waterproof sheet.

Maintenance

Once installed, RockLap H&V Pipe Sections shouldn't require any maintenance.

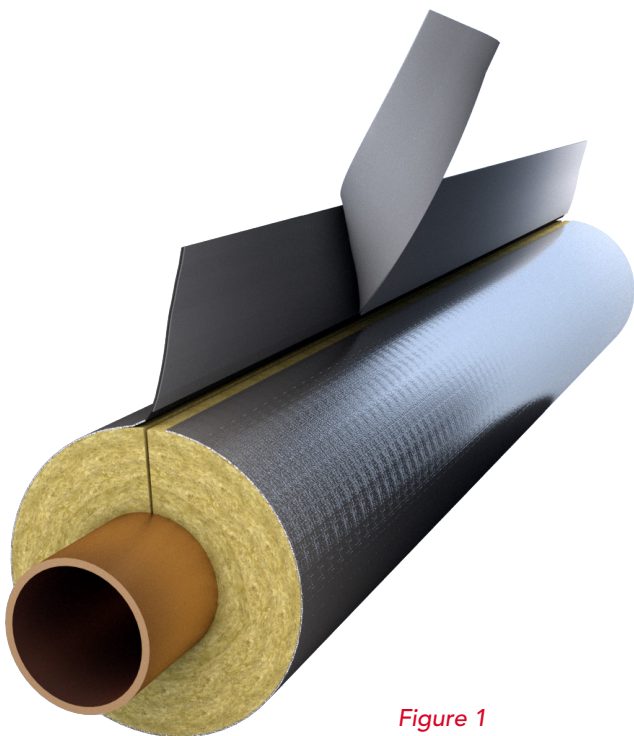


Figure 1

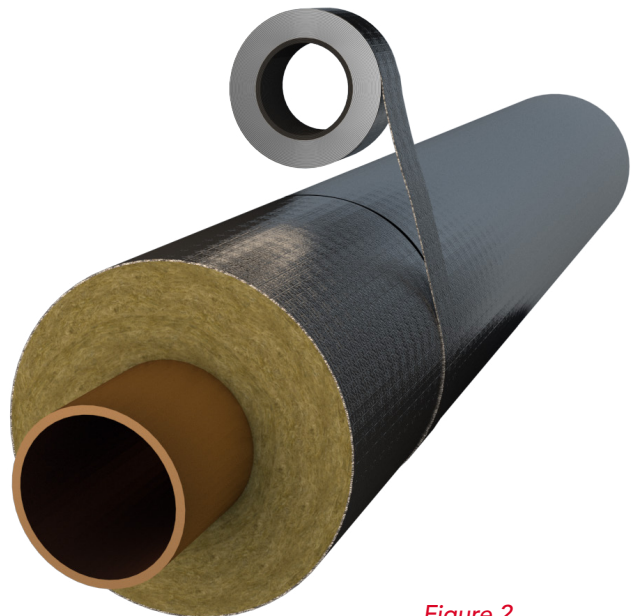


Figure 2

SPECIFICATION CLAUSES

Pipes to be insulated with *mm thick ROCKWOOL RockLap H&V Pipe Sections, having a nominal density not less than 100kg/m³, with a factory applied facing which is a laminate of close mesh reinforcement between two layers of foil including integral lap for fixing. The whole to comply with BS 5422:2023 and BS 5970 water vapour permeance and Building Regulation requirements in relation to thermal and fire. Fixing to be in accordance with manufacturer's instructions, by peeling protective tape from self-adhesive lap and pressing lap smoothly over joint. Where adjacent Sections abut, approved 75 mm wide aluminium tape to be used to maintain integrity of the vapour barrier.

For external applications please see HVAC Specification Detail Guide for external finishes.

**insert required thickness*

RockLap H&V Pipe Sections

BUILDING SAFETY AND PRODUCT USE

LEGAL NOTICES

General safety requirements – Building Safety Act 2022

ROCKWOOL Limited is committed to supporting specifiers, resellers and users of ROCKWOOL products for the full life cycle of the product to comply with the obligations and responsibilities set out in the Building Safety Act 2022. With regard to the general safety requirements of the Act, ROCKWOOL Limited cannot control or foresee every situation where its products might be used. We therefore strongly advise that specifiers, resellers and users contact us where use of ROCKWOOL products is contemplated in applications different from those explicitly described in the latest, relevant ROCKWOOL product datasheets; especially in applications that can be reasonably foreseen as critical to safety.

ROCKWOOL Limited reserves the right to amend the specification of its products without notice. Changes to the ROCKWOOL manufacturing process, or to pertinent regulations, may be reflected in changes to tested and certified product performance. Whilst ROCKWOOL Limited endeavours to keep its publications up to date, readers will appreciate that between publications there may be pertinent changes in the law or other developments affecting the accuracy of the information contained in our publications.

ROCKWOOL Limited does not accept responsibility for the consequences of using (including testing or certifying) its products in applications different from those explicitly described in the relevant ROCKWOOL product datasheets. Expert advice should be sought, and ROCKWOOL Limited should be contacted, where such different use is contemplated, or where the extent of any use described by ROCKWOOL Limited is in doubt.

The ROCKWOOL Trademark

ROCKWOOL® - our trademark

The ROCKWOOL trademark was initially registered in Denmark as a logo mark back in 1936. In 1937, it was accompanied with a word mark registration; a registration which is now extended to more than 60 countries around the world.

The ROCKWOOL trademark is one of the most important assets of the ROCKWOOL Group, and is therefore well-protected and defended by ROCKWOOL throughout the world.

If you require permission to use the ROCKWOOL logo for your business, advertising or promotion, you must apply for a Trade Mark Usage Agreement.

To apply, write to:
marketcom@rockwool.com

Trademarks

Registered trademarks of the ROCKWOOL Group include but are not limited to:

ROCKWOOL®, RockClose®, RainScreen Duo Slab®, HardRock®, RockFloor® Flexi®, RockFall®, FirePro®, DuctRock®, BeamClad®, NyRock®

© ROCKWOOL 2025.
All rights reserved.

Photography and illustrations

The product illustrations are the property of ROCKWOOL Limited and have been created for indicative purposes only.

Unless indicated below, the photography and illustrations used in this guide are the property of ROCKWOOL Limited. We reserve all rights to the usage of these images.

If you require permission to use ROCKWOOL images, you must apply for a Usage Agreement.

To apply, write to:
marketcom@rockwool.com

RockLap H&V Pipe Sections

ROCKWOOL stone wool - safe to install and live alongside

There are no hazardous classifications associated with stone wool insulation manufactured by ROCKWOOL-UK according to EU REACH and UK REACH regulations on health and the environment.

ROCKWOOL safe use instruction sheets and material safety data sheets (where applicable) can be downloaded [here](#).



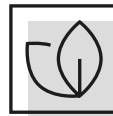
Sustainability

ROCKWOOL products are used to enrich modern living, creating safer, healthier and more climate-resilient communities.

We transform abundant, natural volcanic rock into stone wool insulation products that are used to reduce energy demand, lower fuel bills and help address society's climate change challenges.

ROCKWOOL stone wool insulation is recyclable and can be transformed into new ROCKWOOL products. Please contact us for details of how we can work together to recycle waste ROCKWOOL stone wool material that may be generated during on-site installation.

Our annual sustainability reports, which set out progress against our sustainability goals, and further details of the positive impacts of using our products can be found on our website.



Environment

ROCKWOOL takes a fact-based, auditable approach to documenting our progress in maximising our products' positive impact and minimising the effect our operations have on the environment, backed by third-party references and methodologies. Further details can be found online in our annual sustainability report.

Our high-tech production process uses filters, pre-heaters, after-burners and other cleaning and collection systems that help to reduce the effects of our manufacturing operations on the environment.

ROCKWOOL stone wool insulation does not contain (and has never contained) gases that have ozone depletion potential (ODP) or global warming potential (GWP).

